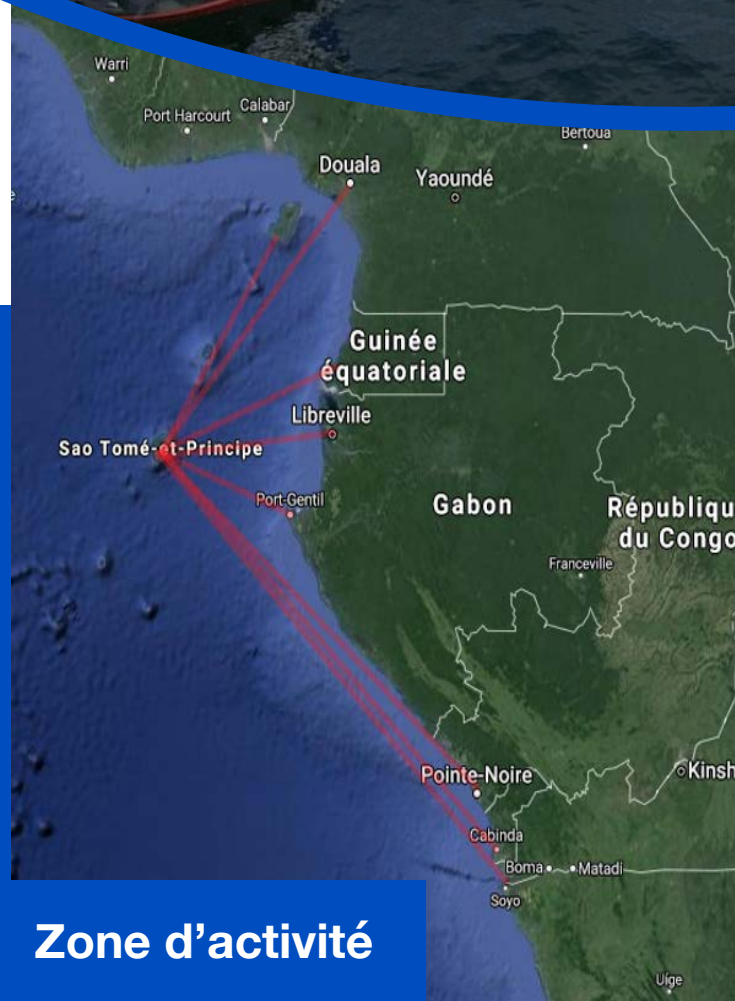


Est une entreprise spécialisée dans le transport fluviomaritime et l'affrètement dans le golfe de Guinée.

Constituée d'une équipe de professionnel à votre écoute. Nous vous offrons une solution adaptée et sur mesure pour chaque type d'opération.

Services:

- Transport fluviomaritime dans le golfe de Guinée
- Mise à disposition d'attelage : Remorqueur + barges
- Remorquage et assistance
- Transbordement



Clients et partenaires :

Accompagne les industriels et les acteurs impliqués dans les projets tel que :

- La construction BTP : transport agrégats et du matériel sur site
- L'exploitation de matières premières : Assistanes aux exploitations pétrolières, forestières et minières
- Plantations : Transport de Fruits et légumes en conteneurs
- Les industries de transformation et/ou les importateurs et exportateurs dans la sous-région CEMAC

Afin de répondre aux contraintes de lieu, nous vous proposons des solutions à chaque projet, à travers des études de faisabilité logistique et des plans d'exécution.

Zone d'activité

CONTACT



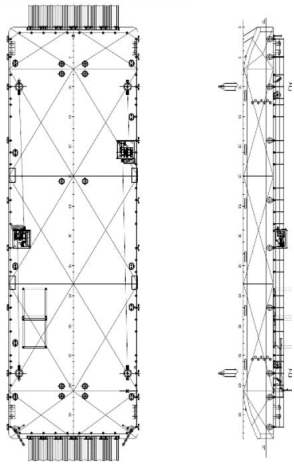
MAC GREGOR MARINE SERVICE - RUA MORTA - Ao lado do BISTP
SAO TOME - SAO TOME E PRINCIPE



Tél : +239 991 75 86 / +33 749 44 96 19



Email : info@macgregor-ms.com



GENERAL

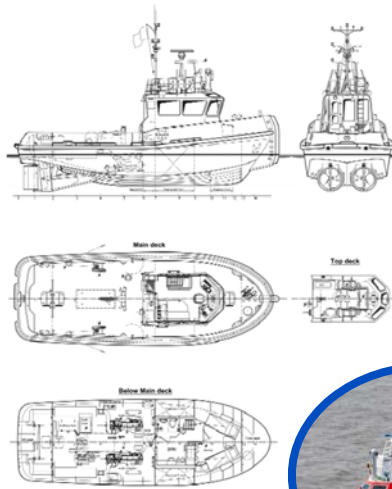
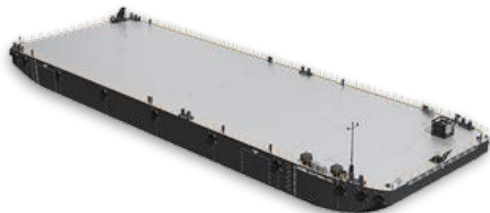
Typical applications: Deck Cargo, RoRo Cargo
 Typical area of operation: Deep Sea, Coastal waters, Harbours, Inland water
 Classification Lloyd's Register ✱100 AT, Pontoon, Strengthened for deck load of 10 ton/m², Bottom Strengthened for Loading and Unloading Aground, ✱IWS
 Flag St. Vincent and the Grenadines

DIMENSIONS

Length moulded 41.40 m
 Beam moulded 13,00 m
 Depth moulded 3,00 m
 Draught max. 2,37 m
 Free deck space 530 m²
 Deadweight max. 965 ton

CAPACITIES

Deck load 10 ton/m²
 Deck thickness 12 mm extra heavy deck
 Void spaces 10 pcs., 1.500 m³
 Ramp panels 1,5 meter width and 8 meter length
 Railing Removable stanchions with wire guard rails



Basic functions Towing and mooring, pushing and survey operations
 Classification Bureau Veritas
 I [?] [?] HULL • MACH Tug Coastal area incl.tonnage certificate
 Painting: Epoxy paint system

DIMENSIONS

Length overall 16.76 m
 Beam overall 5.94 m Depth at sides 2.54 m
 Draught aft (approx.) 2.25 m
 Displacement:90 t
 Scantlings Sides and bottom 10 mm, Sheerstrake 20 mm

TANK CAPACITIES

Fuel oil 14.2 m³
 Fresh water 1.1 m³
 Sewage 0.7 m³
 Bilge water 0.5 m³

PERFORMANCES

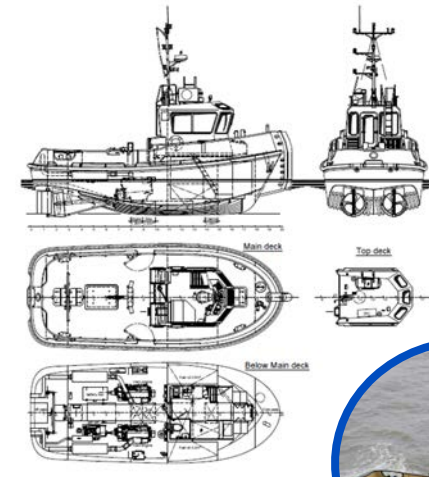
Bollard pull ahead 16 t Speed 11.0 kn

PROPULSION SYSTEM

Main engines 2xCaterpillar C18 TA/A / Total power 894 bkW (1216 bhp) at 1800 rpm
 Gearboxes 2x Reintjes WAF 264L 4.5:1
 Propellers 2x Kaplan II Fixed pitch
 Nozzles 2x 1350 mm Van de Giessen 'Optima' with stainless steel innerrings
 Rudders 2x streamlined double plate
 Steering gear Powered-hydraulic 2x 50° + rudder indicator

NAUTICAL AND COMMUNICATION EQUIPMENT

Searchlight Pesch 250W
 Horn: Electric Ebuki E90
 Ø Radar Furuno FR-8065
 Compass Cassens & Plath type Kottter
 GPS Furuno GP-32
 Echosounder Furuno LS-6100
 VHF radio telephone Sailor Compact 6248, 25 W
 Navigation lights Navigation lights incl. towing and side lights Floodlight 150 W on aft deck



Basic functions Towing and mooring operations
 Classification Bureau Veritas
 I ✱ HULL • MACH Seagoing Launch / Painting Epoxy paint system

DIMENSIONS

Length overall 13.08 m
 Beam overall 5.28 m
 Depth at sides 2.30 m
 Draught aft (approx.) 1.80 m
 Displacement (98% consumables)58 t
 Scantlings Sides and bottom 10 mm, Sheerstrake 15 mm

TANK CAPACITIES

Fuel oil 5.80 m³
 Fresh water 0.35 m³
 Sewage 0.33 m³ B
 ilge water 0.30 m³

PERFORMANCES

Bollard pull 8.3 t
 Speed 8.8 kn

PROPULSION SYSTEM

Main engines 2x Volvo D9 MH / Total power 442 bkW (600 bhp) at 1800 rpm
 Gearboxes Twin Disc MG 5091 / 3.82:1
 Propellers 2x Kaplan fixed pitch, 1050 mm diameter
 Nozzles 2x Van de Giessen 'Optima' with stainless steel innerrings
 Engine control Volvo EVC
 Rudders 2x double plate high performance
 Steering gear Powered-hydraulic 2x 50° + rudder indicator

NAUTICAL AND COMMUNICATION EQUIPMENT

Searchlight Den Haan 250 W, 24 V
 Ø Radar Furuno FR-1835
 Compass fluxgate Cassens & Plath
 GPS Furuno GP-32
 Echosounder Furuno LS-6100
 VHF radio telephone Sailor Compact 6248, 25 W
 Navigation lights Navigation lights incl. towing and side lights Floodlight 150 W on aft deck